

58:9 Ultra Stretch for Dynamic Digital Content

Ultra Stretch Signage 86BH5C



Ultra Stretch 86BH5C is a new signage format with a 58:9 widescreen that can display dynamic content depending on the user's installation environment. (e.g. airports, subways, banks, art galleries, or retail stores) This product is also a work of structural art in itself that can be seen as digital decor.



Key Features

New Design Configuration



Ultra HD Resolution (3,840 x 600)

Ultra HD large screens deliver an immersive viewing experience.



Conventional

86BH5C

58:9 Extended Wide Format

Dynamic content is delivered on one screen since the new widescreen format is a 58:9 bar- type display.



Conventional

86BH5C

Multiple Screens



4 Divided PBP in Landscape or Portrait

The Picture-by-Picture (PBP) feature allows you to divide a screen into four parts in landscape or portrait installations.



Download LG Commercial Display Mobile App



Learn more www.lg.com/b2b or www.lgcommercial.com

YouTube youtube.com/c/LGCommercialDisplay

LG may make changes to specifications and product descriptions without notice.
Copyright © 2016 LG Electronics Inc. All rights reserved. "LG Life's Good" is a registered of LG Corp.
The names of products and brands mentioned here may be the trademarks of their respective owners.



58:9 Ultra Stretch for Dynamic Digital Contents

Ultra Stretch Signage 86BH5C



Screen Size
86"

- 86BH5C
- Brightness : 500cd/m²
 - Bezel : 4.4mm (Left/Right), 5.9mm (Top/Bottom)
 - Depth : 81.7mm
 - Interface : HDMI, DP, RJ45, IR, USB2.0, USB3.0, Daisy-Chain (DP Out, RS232C In/Out, RJ45)

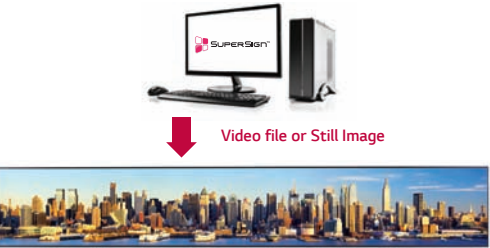
Other Features

Content Management



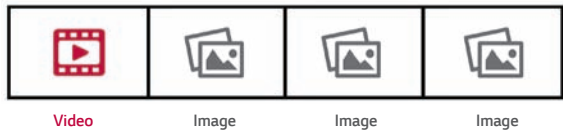
58:9 Content Editing

With the LG SuperSign media editor, you can easily edit images or video clips of original content without any additional editing programs.



Multiple Content Creation

Users can edit content that consists of one video and several still images (up to 20) with SuperSign Editor.



Convenient Connectivity Support



Tiling Scene with Daisy Chain

This product supports lateral tiling for 1x4 or 4x1 installations (landscape or portrait), and up to a 4x4 installation with a daisy chain configuration.



LAN Daisy Chain

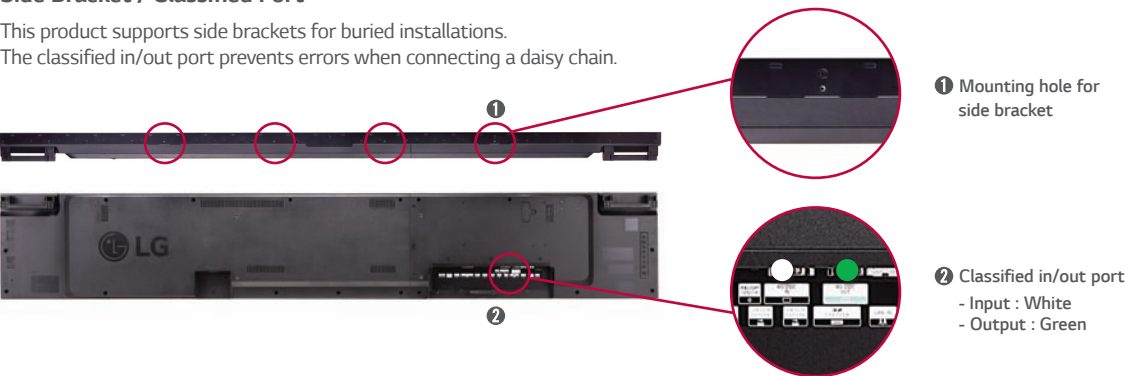
The LAN daisy chain allows you to control and monitor devices, distribute content, and even update firmware.



Easy Installation

Side Bracket / Classified Port

This product supports side brackets for buried installations. The classified in/out port prevents errors when connecting a daisy chain.



Specifications

BH5C		86BH5C-BF
PANEL	Screen Size	86"
	Panel Technology	IPS
	Aspect Ratio	58:9
	Native Resolution	3,840 x 600 (UHD)
	Brightness	Typ: 500cd/m ² , Min : 400cd/m ²
	Contrast Ratio	1,100:1(Typ)
	Dynamic CR	500,000:1 (Typ)
	Viewing Angle (H x V)	178 x 178
	Response Time	8ms (G to G BW) typ.
	Surface Treatment	AGP (10% Haze)
CONNECTIVITY	Input	HDMI(3), DP, OPS, DVI-D, USB2.0, USB3.0, SD Card
	Output	Analog Audio, DP, RS232C, RJ45
	External Control	RS232C, RJ45, IR+B Receiver, Pixel Sensor, Analog Audio
	Orientation	Landscape / Portrait
PHYSICAL SPECIFICATION	Bezel Color	Black
	Bezel Width	4.4mm (L/R), 5.9mm (T/B)
	Monitor Dimension (W x H x D)	2,158.3 x 348.5 x 81.7mm
	Weight (Head)	20.5kg
	Carton Dimensions (W x H x D)	2,290 x 228 x 479
	Packed Weight	35.4kg
	VESA™ Standard Mount Interface	600 x 200mm
SPECIAL FEATURES		Temperature Sensor, Auto Brightness Sensor, Tile Mode, Natural Mode@Tile Mode, ISM Method, Energy Saving, Smart Energy Saving, File Play with USB/SD/Internal Memory, PBP, 8GB (System 4GB + Available 4GB), Wi-Fi Dongle Ready, 4K Up Scaling
ENVIRONMENT CONDITIONS	Operation Temperature Range	0 °C to 40 °C
	Operation Humidity Range	10 % to 80 %
POWER	Power Supply	100-240V~, 50/60Hz
	Power Type	Built-In Power
	Power Consumption	Typ. / Max. 180W / 220W
	Smart Energy Saving	30% of typical
STANDARD (CERTIFICATION)	Safety	UL / cUL / CB / TUV / KC
	EMC	FCC Class "A" / CE / KC
	ErP / Energy Star	NA / NA
MEDIA PLAYER COMPATIBILITY	OPS Type Compatible	Yes
	External Media Player Attachable	No
SOFTWARE COMPATIBILITY	SuperSign W/Lite	Yes
	SuperSign C	Yes
ACCESSORY	Basic	Remote Controller (2ea Batteries included), Power Cord, DP (3M), RS-232C Cable (3M) Owner's Manual (Website upload)
	Optional	AN-WF500 (Wi-Fi USB Dongle), MP700, KT-OPSA (OPS KIT), KT-SP0 (Pixel Sensor) ** Stand is not available

Dimension (unit : mm)

86"
2,158.3 x 348.5 x 81.7mm / 20.5kg



Connectivity

- 1 AUDIO IN/OUT
- 2 DP OUT
- 3 DP IN
- 4 DVI-D IN
- 5 HDMI IN
- 6 USB
- 7 SD Card
- 8 LAN IN
- 9 LAN OUT
- 10 PIXEL SENSOR
- 11 IR & LIGHT SENSOR
- 12 RS-232C IN
- 13 RS-232C OUT

